

Newly Discovered Original Architectural Drawings of Stan Hywet Hall Shows Similarities & Differences

By Chloe Wingard
Collections Technician Specialist

Hi everyone, it's Chloe Wingard from the Collections Department, with an interesting story about architectural drawings of Stan Hywet Hall.

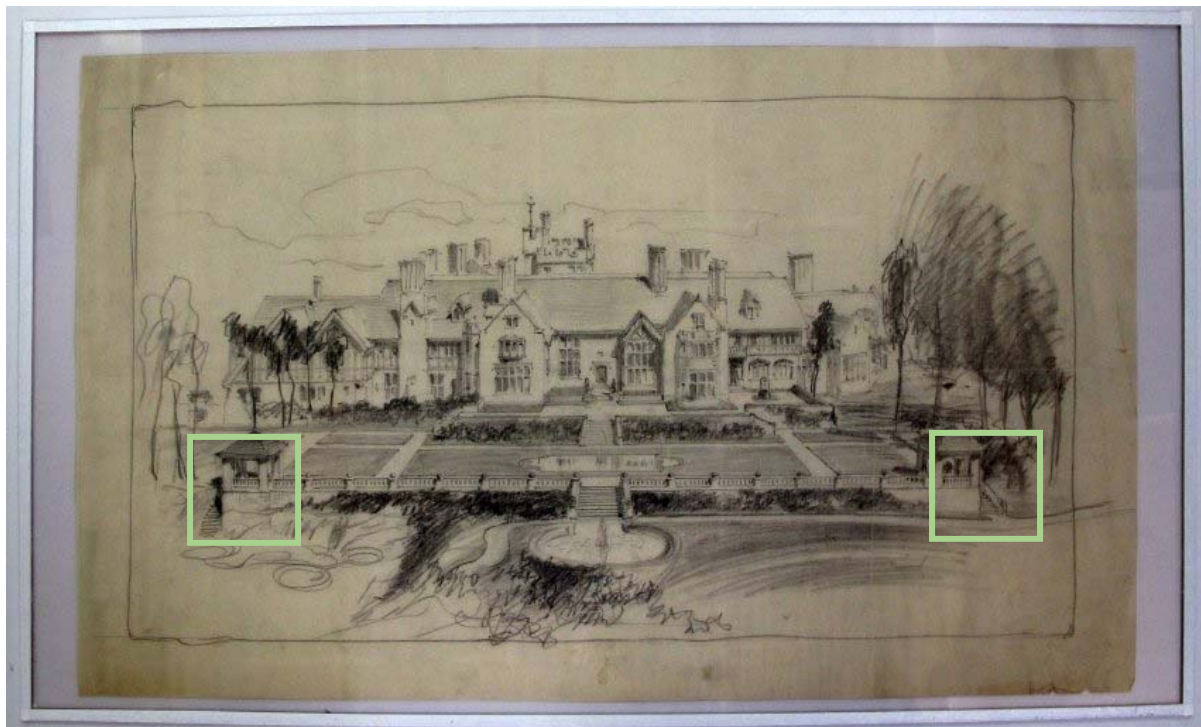
Earlier this year, the University of Akron Archives found these original Stan Hywet architectural drawings in their collection, and generously donated them to us. These drawing are attributed to Stan Hywet's architect, Charles S. Schneider, from ca. 1912.

When the drawings came into our possession, they were rolled tightly, and had tears near the edges. The collections team quickly went to work to gently unroll and stabilize the drawings. They were put under custom UV protective glass so that the sun won't be able to damage them further.

Upon closer inspection, we can see some slight architectural changes on these drawing. ***Can you spot some similarities and differences between these drawings and what was actually built?***

The staff and volunteers at Stan Hywet are *ECSTATIC* when pieces like this are returned to the collection — because our understanding of the Seiberling family and their legacy becomes more expansive with every addition.

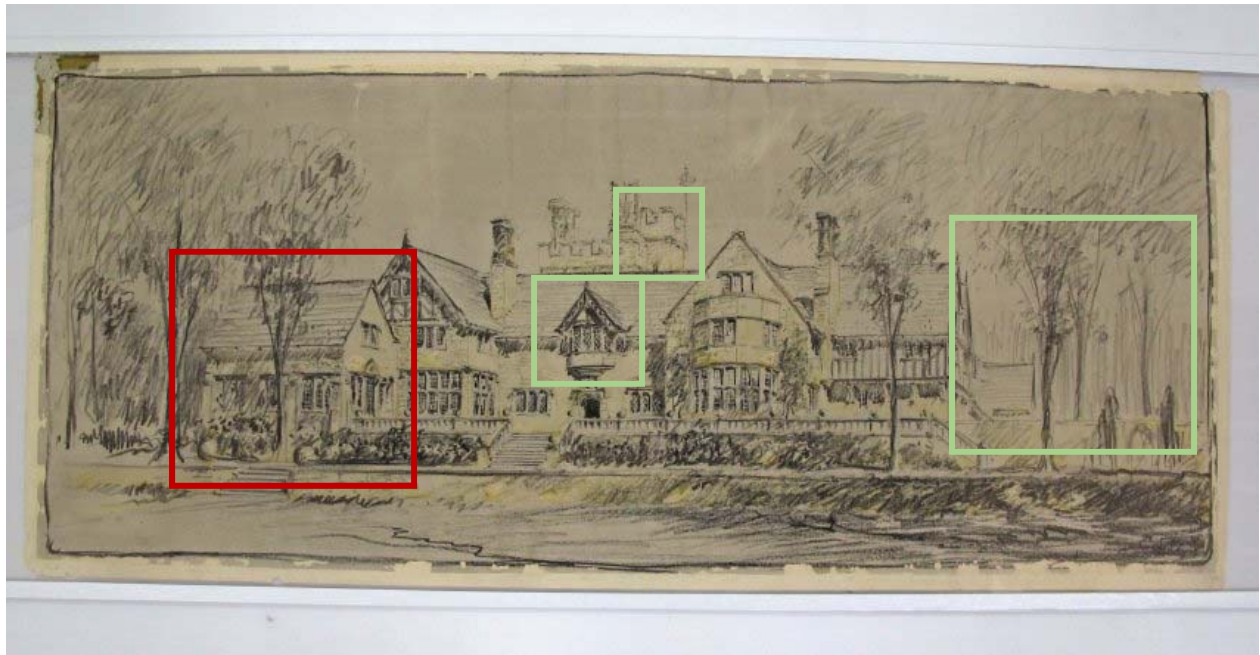
We hope to have these drawings on display sometime in the next few years, once they settle in their new custom frames.



In this drawing, the Manor House and West Terrace look as they do today —except for the addition of the Tea Houses. They are flanking the West Terrace, instead of their actual location at the end of the Birch Tree Allée.



This drawing shows the front of the Manor House, with a *dramatically different* layout. The front door, tower, chimneys, wings, and gables are all in different locations, and of different shapes. However, they evoke the same quality and bottom-line style that Stan Hywet has today.



This drawing is relatively similar to Stan Hywet today. The part of the building outlined in red was never built. The elevator shaft is on the other side of the Tower, too: you can spot it near the top center of the drawing. There is a small bay window above the back door that didn't make the construction cut. And the whole Music Room wing seems to be missing!!!